

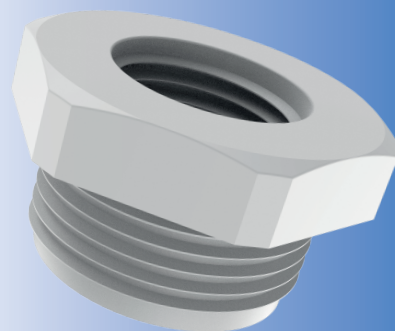
Reducer, Polyamide

General

- Reducers for the transition of different thread sizes.

Technical Details

Material	Polyamide 6, 30% Glass Fibre
Thread Type	<ul style="list-style-type: none"> • Metric • PG
Accessories	<ul style="list-style-type: none"> • Locknut • Gasket (Washer)
Remarks	<ul style="list-style-type: none"> • We recommend the use gaskets to ensure IP rating for rough surfaces or through holes. • Accessories must be ordered separately.



Thread Type **METRIC** acc. to EN 60423

Outer Thread		Spanner Width SW mm	Length TL mm	Height h mm	Part Number	
Male Thread (MT)	Female Thread (FT)				RAL 7035 light grey	RAL 9005 black
M16x1.5	M12X1,5	24	8,0	4,0	PR01M02M-1	PR01M02M-2
M20x1.5	M12X1,5	24	8,0	4,0	PR1M02M-1	PR1M02M-2
M20x1.5	M16X1,5	24	8,0	4,0	PR1M01M-1	PR1M01M-2
M25x1.5	M12X1,5	32	8,0	6,0	PR2M02M-1	PR2M02M-2
M25x1.5	M16X1,5	32	6,0	8,0	PR2M01M-1	PR2M01M-2
M25x1.5	M20X1,5	32	6,0	8,0	PR2M1M-1	PR2M1M-2
M32x1.5	M12X1,5	36	10,0	5,9	PR3M02M-1	PR3M02M-2
M32x1.5	M16X1,5	36	10,0	6,0	PR3M01M-1	PR3M01M-2
M32x1.5	M20X1,5	36	10,0	6,1	PR3M1M-1	PR3M1M-2
M32x1.5	M25X1,5	36	10,0	5,9	PR3M2M-1	PR3M2M-2
M40x1.5	M16X1,5	46	12,0	7,0	PR4M01M-1	PR4M01M-2
M40x1.5	M20X1,5	46	12,0	7,0	PR4M1M-1	PR4M1M-2
M40x1.5	M25X1,5	46	12,0	7,0	PR4M2M-1	PR4M2M-2
M40x1.5	M32X1,5	46	12,0	7,0	PR4M3M-1	PR4M3M-2
M50x1.5	M20X1,5	55	14,0	5,9	PR5M1M-1	PR5M1M-2
M50x1.5	M25X1,5	55	14,0	6,0	PR5M2M-1	PR5M2M-2
M50x1.5	M32X1,5	55	14,0	6,1	PR5M3M-1	PR5M3M-2
M50x1.5	M40X1,5	55	14,0	5,9	PR5M4M-1	PR5M4M-2
M63x1.5	M25X1,5	68	12,0	7,0	PR6M2M-1	PR6M2M-2
M63x1.5	M32X1,5	65	15,0	7,0	PR6M3M-1	PR6M3M-2
M63x1.5	M40X1,5	65	15,0	7,0	PR6M4M-1	PR6M4M-2
M63x1.5	M50X1,5	65	15,0	7,0	PR6M5M-1	PR6M5M-2

Thread Type **PG** acc. to DIN 40430

Outer Thread		Spanner Width SW mm	Length TL mm	Height h mm	Part Number	
Male Thread (MT)	Female Thread (FM)				RAL 7035 light grey	RAL 9005 black
PG 9	PG 7	19	8,0	12,5	PR2P1P-1	PR2P1P-2
PG 11	PG 7	22	8,0	6,0	PR3P1P-1	PR3P1P-2
PG 11	PG 9	22	8,0	14,5	PR3P2P-1	PR3P2P-2
PG 13,5	PG 7	24	9,0	6,0	PR4P1P-1	PR4P1P-2
PG 13,5	PG 9	24	9,0	6,0	PR4P2P-1	PR4P2P-2
PG 13,5	PG 11	24	9,0	15,0	PR4P3P-1	PR4P3P-2
PG 16	PG 9	27	10,0	6,0	PR5P2P-1	PR5P2P-2
PG 16	PG 11	27	10,0	18,0	PR5P3P-1	PR5P3P-2
PG 16	PG 13,5	27	10,0	18,0	PR5P4P-1	PR5P4P-2
PG 21	PG 11	32	11,0	5,0	PR6P3P-1	PR6P3P-2
PG 21	PG 13,5	32	11,0	5,0	PR6P4P-1	PR6P4P-2
PG 21	PG 16	32	11,0	5,0	PR6P5P-1	PR6P5P-2
PG 29	PG 13,5	40	11,0	6,0	PR7P4P-1	PR7P4P-2
PG 29	PG 16	40	11,0	6,0	PR7P5P-1	PR7P5P-2
PG 29	PG 21	40	11,0	6,0	PR7P6P-1	PR7P6P-2
PG 36	PG 16	53	14,0	7,0	PR8P5P-1	PR8P5P-2
PG 36	PG 21	50	13,0	6,0	PR8P6P-1	PR8P6P-2
PG 36	PG 29	50	18,0	6,0	PR8P7P-1	PR8P7P-2
PG 42	PG 21	55	16,0	6,0	PR9P6P-1	PR9P6P-2
PG 42	PG 29	55	18,0	6,0	PR9P7P-1	PR9P7P-2
PG 42	PG 36	55	18,0	6,0	PR9P8P-1	PR9P8P-2
PG 48	PG 29	60	18,0	6,0	PR10P7P-1	PR10P7P-2
PG 48	PG 36	60	14,0	6,0	PR10P8P-1	PR10P8P-2
PG 48	PG 42	60	17,0	6,0	PR10P9P-1	PR10P9P-2

