

Technical Data Sheet - Volans Rigid Conduit Male

General

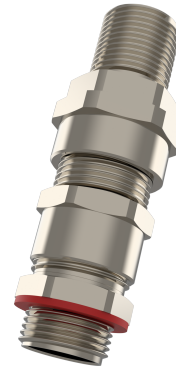
Group II double sealing hazardous area cable gland, suitable for armoured cables (SWA, AWA.) with lead inner sheaths.

The Orion Lead Sheathed is Exe, Exd and Ext certified and suitable for installation in zones 1/21 and zones 2/22 hazardous areas.

The gland provides both a flameproof seal on the inner cable sheath and an IP and cable retention seal on the outer jacket.

The gland also provides an integrated grounding ring for the lead inner sheath.

ATEX/IECEx certified along with various other approvals - see below for full technical details.



Technical

Suitable for use in	Group I, Group II, Group III
Equipment Marking	EX I M2 Ex db I Mb, Ex eb I Mb EX II 2GD Ex db IIC Gb, Ex eb IIC Gb, Ex tb IIIC Db
Ingress Protection Rating	IP66, IP68 - 5 Bar, 30 min
Type Rating	TYPE 4X
Cable Gland Material	Brass, Brass Nickel Plated, Stainless Steel, Aluminium
Seal Material	Chloroprene, Silicone
Operating Temperature	Chloroprene: -40°C to +100°C Silicone: -60°C to +130°C For LT type cable glands, the upper temperature is limited to +80°C
Thread Type	Metric, NPT Other thread types available upon request.

Thread Size	Conduit Thread Size	Inner Cable Ø	Outer Cable Ø	Armour Wire Ø	Shield Wire Ø	TL	SW 1/2/3/4	Outer Ø 'D'	Max. Height 'H'	Product Code
M50x1.5	M63x1.5	22.0 - 32.5	29.0 - 41.0	1.6 - 2.0	0.2 - 0.8	15.0	55/55/67/67	75.0	127.0	VOLM5SM6 M

Certificates

Bimed Teknik Aletler San. ve Tic. A. Ő.

Özar Sanayi Bölgesi, Deliklikaya Mh. Yüzbaşı Mehmet Hilmi Cd. No.28/1 Arnavutköy 34555 / İstanbul / Türkiye

T: +90 212 875 73 76

bimedteknik.com

info@bimedteknik.com

